

Configuration Data

Model **A94** **1** - **351SI**

Control & Output Mode

Manual Control

Speed (stroking frequency) and stroke length manually adjustable.

A14	0.58	GPH (2.2 l/h)	250	psi (17.3 Bar)
A15	1.00	GPH (3.8 l/h)	110	psi (7.6 Bar)
A16	2.00	GPH (7.6 l/h)	50	psi (3.5 Bar)
A17	0.42	GPH (1.6 l/h)	140	psi (9.7 Bar)
A18	0.75	GPH (2.8 l/h)	80	psi (5.5 Bar)

Manual Control / Extended Low Range

Speed (stroking frequency) and stroke length manually adjustable. Minimum stroke rate less than 2 per minute for very low outputs.

A34	0.58	GPH (2.2 l/h)	250	psi (17.3 Bar)
A37	0.42	GPH (1.6 l/h)	140	psi (9.7 Bar)

Instrument Responsive / Manual Control

Manual adjustment features of Series A1 plus switch conversion to external control for automatic systems.

A74, A94	0.58	GPH (2.2 l/h)	250	psi (17.3 Bar)
A75, A95	1.00	GPH (3.8 l/h)	110	psi (7.6 Bar)
A76, A96	2.00	GPH (7.6 l/h)	50	psi (3.5 Bar)
A77, A97	0.42	GPH (1.6 l/h)	140	psi (9.7 Bar)
A78	0.75	GPH (2.8 l/h)	80	psi (5.5 Bar)

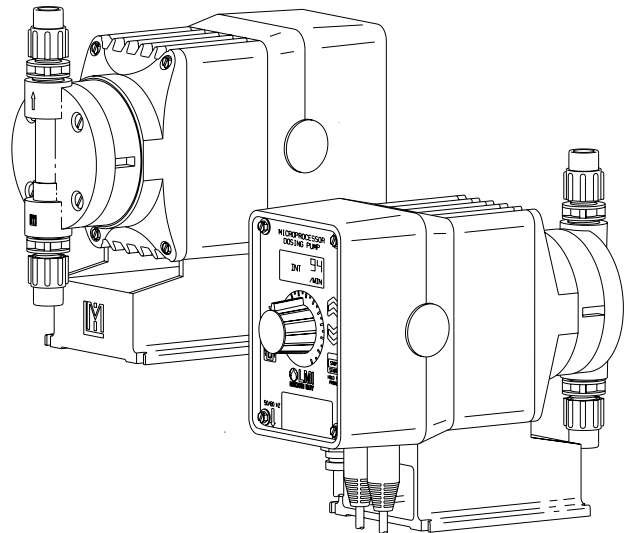
Voltage Code

1	120 VAC, US Plug
2	240 VAC, US Plug
3	220-240 VAC, DIN Plug
5	240-250 VAC, UK Plug
6	240-250 VAC, Aust./NZ Plug
7	220-240 VAC, Swiss Plug

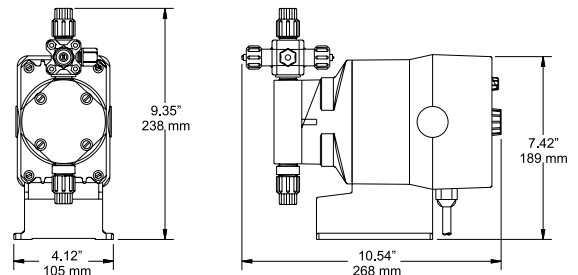
Liquid End

See next page for complete liquid end specifications and selection.

Electronic Metering Pumps

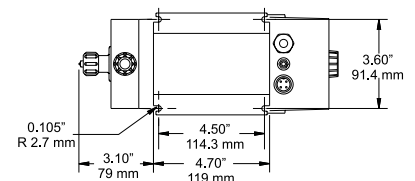


Dimensions



Dimensions shown are maximums for largest available Liquid End.

Dimensions will vary depending on Liquid End selected.



Specifications

Series	Strokes Per Minute (Adjustable)		Stroke Length Recommended Minimum	(Adjustable) Input Power @ Max Speed	Average Shipping Weight
	Min	Max			
A14, A74*	1	100	20%	22 watts	10 lbs (4.55 kg)
A15, A75*					
A16, A76*					
A17, A77*	1	100	30%		
A18, A78*					
A34	1	100	20%		
A37	1	100	30%		



8 Post Office Square
Acton, MA 01720 USA
TEL: (978) 263-9800
FAX: (978) 264-9172
<http://www.lmipumps.com>



Configuration Data & Materials of Construction

Drive Assembly	Liquid End No.	Size Code	Materials of Construction				Accessory	Tubing & Connections	
			Head & Fittings	Balls	Liquifram™	Check Valve		Discharge	Suction
A74	350SI†	0.5	Acrylic/PGC™	Ceramic	Fluorofilm™	PGC™/Polyprel®	4FV	PE .250" O.D.	
	351SI†	0.5	PGC™/PGC™	Ceramic	Fluorofilm™	PGC™/Polyprel®	4FV	PE .250" O.D.	
A77	352SI†	0.5	PVDF/PVDF	Ceramic	Fluorofilm™	PVDF/Polyprel®	4FV	PE .250" O.D.	
A34	353SI†	0.5	PVDF/PVDF	Ceramic	Fluorofilm™	PVDF/PTFE	4FV	PE .250" O.D.	
A37	150FS	0.5	Acrylic/PVDF	PTFE	Fluorofilm™	Hypalon®	4FV	PE .250" O.D.	
A14	155HV	0.5	Polypropylene	316 S.S.	Fluorofilm™	PTFE		PE .5" O.D.	Vinyl .938" O.D.
A17	155S**	0.5	Polypropylene	Ceramic	Fluorofilm™	PTFE	4FV	PE .250" O.D.	
A94	156	0.5	Acrylic/PP	316 S.S.	Fluorofilm™	Hypalon®		PE .5" O.D.	Vinyl .938" O.D.
A97	257	0.5	316 S.S.	316 S.S.	Fluorofilm™	316 S.S.		Pipe 1/4" NPT M	

A75	390SI†	0.9	Acrylic/PGC™	Ceramic	Fluorofilm™	PGC™/Polyprel®	4FV	PE .375" O.D.	
	391SI†	0.9	PGC™/PGC™	Ceramic	Fluorofilm™	PGC™/Polyprel®	4FV	PE .375" O.D.	
A78	392SI†	0.9	PVDF/PVDF	Ceramic	Fluorofilm™	PVDF/Polyprel®	4FV	PE .375" O.D.	
A15	393SI†	0.9	PVDF/PVDF	Ceramic	Fluorofilm™	PVDF/PTFE	4FV	PE .375" O.D.	
A18	297	0.9	316 S.S.	316 S.S.	Fluorofilm™	316 S.S.		Pipe 1/4" NPT M	
A95	85HV	0.9	Polypropylene	316 S.S.	Fluorofilm™	PTFE		PE .5" O.D.	Vinyl .938" O.D.
	86	0.9	Acrylic/PP	316 S.S.	Fluorofilm™	Hypalon®		PE .5" O.D.	Vinyl .938" O.D.
	89	0.9	UHMW PE	Ceramic	Hypalon®	Hypalon®		PE .5" O.D.	Vinyl .5" O.D.
	91FS	0.9	Acrylic/PVDF	PTFE	Hypalon®	Hypalon®	4FV	PE .375" O.D.	Vinyl .375" O.D.
	92S**	0.9	PVC	Ceramic	Fluorofilm™	PTFE	4FV	PE .375" O.D.	
	94S**	0.9	PVC	Ceramic	Fluorofilm™	PTFE	4FV	Pipe 1/4" NPT M	
	95S**	0.9	Polypropylene	Ceramic	Fluorofilm™	PTFE	4FV	PE .375" O.D.	

A76	360SI†	1.8	Acrylic/PGC™	Ceramic	Fluorofilm™	PGC™/Polyprel®	4FV	PE .375" O.D.	
	361SI†	1.8	PGC™/PGC™	Ceramic	Fluorofilm™	PGC™/Polyprel®	4FV	PE .375" O.D.	
A16	362SI†	1.8	PVDF/PVDF	Ceramic	Fluorofilm™	PVDF/Polyprel®	4FV	PE .375" O.D.	
A96	363SI†	1.8	PVDF/PVDF	Ceramic	Fluorofilm™	PVDF/PTFE	4FV	PE .375" O.D.	
	277	1.8	316 S.S.	316 S.S.	Fluorofilm™	316 S.S.		Pipe 1/4" NPT M	
	62S**	1.8	PVC/PVDF	Ceramic	Fluorofilm™	Polyprel®	4FV	PE .375" O.D.	
	65S**	1.8	Polypropylene	Ceramic	Fluorofilm™	PTFE	4FV	PE .375" O.D.	
	74S**	1.8	PVC	Ceramic	Fluorofilm™	PTFE	4FV	Pipe 1/4" NPT M	
	75HV	1.8	Polypropylene	316 S.S.	Fluorofilm™	PTFE		PE .5" O.D.	Vinyl .938" O.D.
	76	1.8	Acrylic/PP	316 S.S.	Fluorofilm™	Hypalon®		PE .5" O.D.	Vinyl .938" O.D.
	79	1.8	UHMW PE	Ceramic	Hypalon®	Hypalon®		PE .5" O.D.	Vinyl .5" O.D.

See front page for voltage code specifications.

** These Liquid Ends are available without a 4-FV.

† To specify 1/4" NPT male, change 'I' to 'P'. To specify black, UV resistant tubing, change 'I' to 'U'. To specify Bleed 4FV, change 'S' to 'B'. To specify 3FV, change 'S' to 'T'.

3FV indicates that the pump is equipped with an LMI Three Function Valve (pressure relief, priming aid, line drain).

4FV indicates that the pump is equipped with an LMI Four Function Valve. This diaphragm type, anti-syphon/pressure relief valve is installed on the pump head. It provides anti-syphon protection and aids in priming, even under pressure.

Fluorofilm™ is a copolymer of PTFE and PFA. Polyprel® is an elastomeric PTFE copolymer.

Polyprel is a registered trademark of Liquid Metronics, Inc. Fluorofilm, Liquifram, PGC are trademarks of Liquid Metronics, Inc. Hypalon is a registered trademark of E. I. du Pont de Nemours & Co., Inc.

Output Information

Series	Gallons per Hour		Liters per Hour		mL/cc per Minute		mL/cc per Stroke		Maximum Injection Pressure
	Min	Max	Min	Max	Min	Max	Min	Max	
A14, A34, A74*, A94*	0.001	0.58	0.004	2.2	0.07	37	0.07	0.37	250 psi (17.3 Bar)
A15, A75*, A95*	0.002	1.00	0.008	3.8	0.13	63	0.13	0.63	110 psi (7.6 Bar)
A16, A76*, A96*	0.004	2.00	0.015	7.6	0.25	126	0.25	1.26	50 psi (3.5 Bar)
A17, A37, A77*, A97*	0.001	0.42	0.005	1.6	0.08	26	0.08	0.26	140 psi (9.7 Bar)
A18, A78*	0.002	0.75	0.009	2.8	0.14	47	0.14	0.47	80 psi (5.5 Bar)

* Minimum output is based on one stroke per minute. Minimum output can be reduced further in external mode. Series A9 pumps may be programmed for strokes per hour for lower outputs.